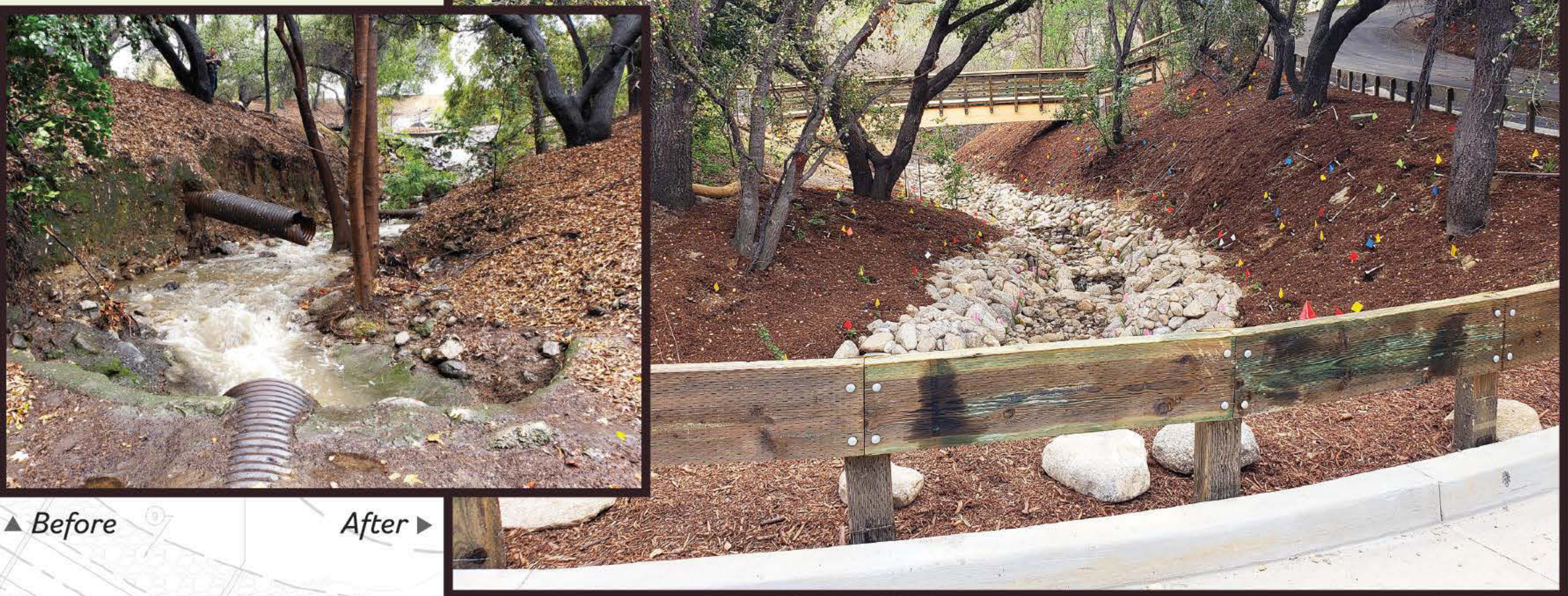


Welcome to Berkshire Creek

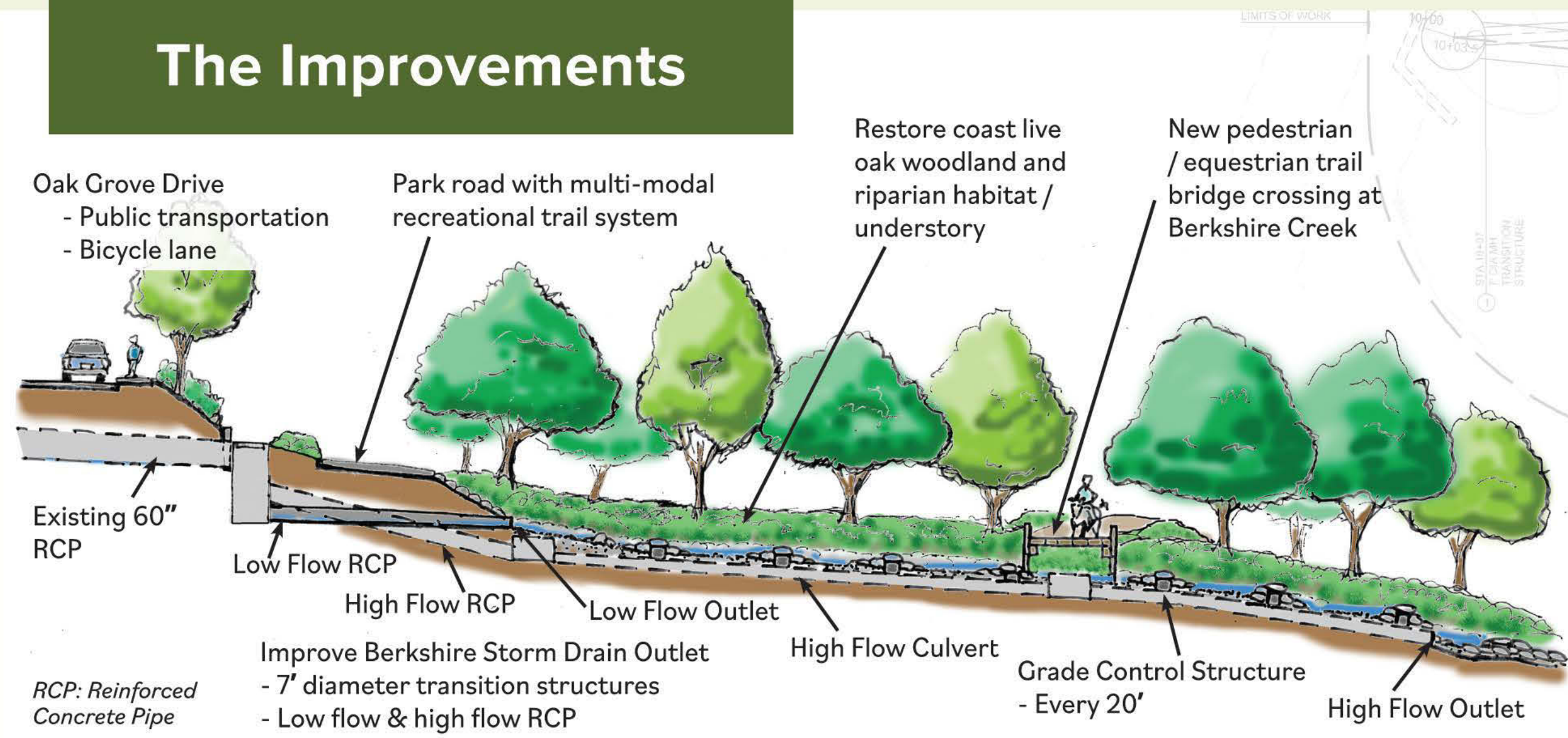
Canyon restoration contributes to a safer and more eco-conscious watershed park for all

This is a quiet little canyon in the southwest corner of Hahamongna Watershed Park that has been degraded over the years by flooding and erosion. Berkshire Creek drains a small subwatershed that covers La Canada High School and the surrounding neighborhood and flows into the Hahamongna basin, the Arroyo Seco and eventually to the Los Angeles River and the Pacific Ocean.

The Berkshire Creek Area Improvement Project, sponsored by the City of Pasadena and the Arroyo Seco Foundation, is an Urban Streams Restoration program, completed in the Spring of 2020, that has upgraded habitat, improved public safety and restored a more natural hydrology to Berkshire Creek.



The Improvements



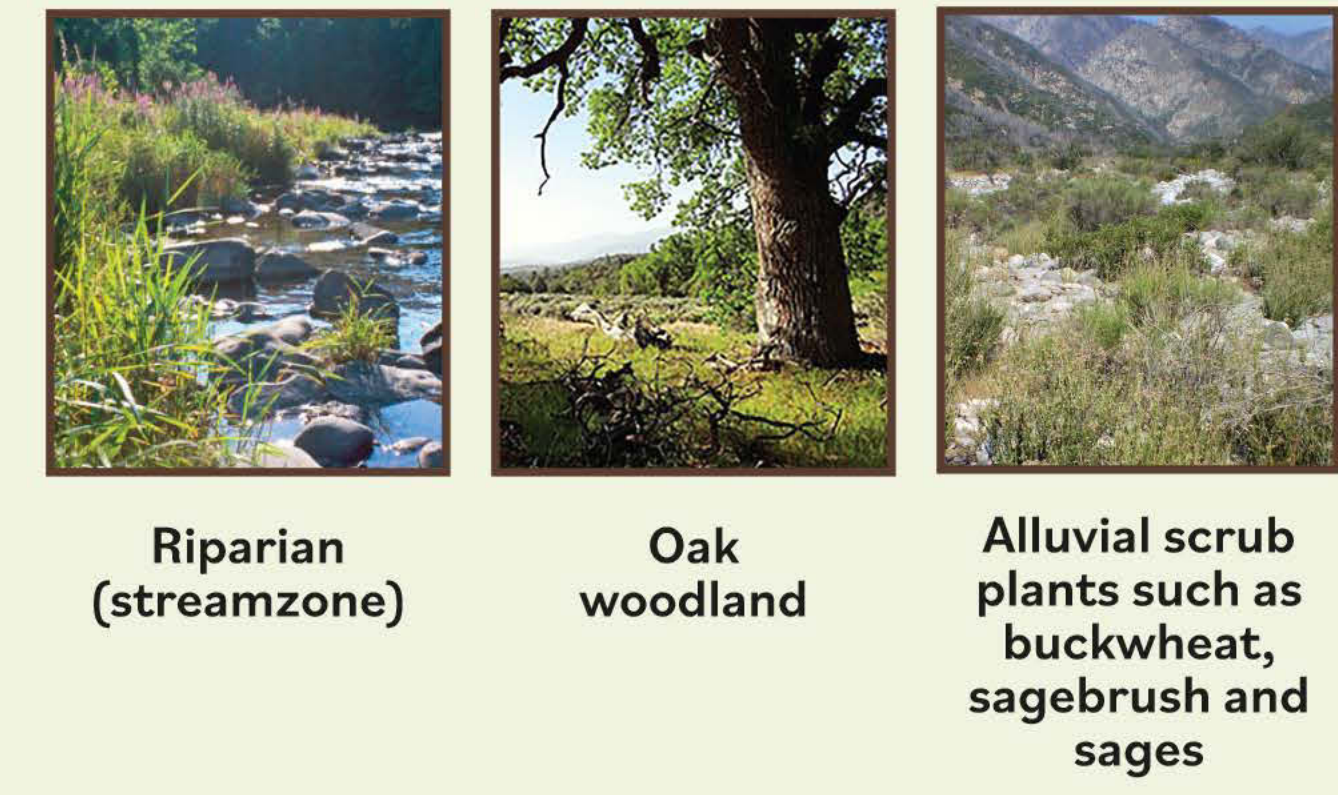
How we've improved the safety and natural qualities of Berkshire Creek and Hahamongna Watershed Park.

- Restored and stabilized the eroded stream channel
- Built a wooden pedestrian/equestrian bridge to connect the trail
- Established a native meadow to replace an asphalt parking lot in the picnic area
- Improved the water quality leading to the Arroyo Seco stream
- Enhanced Sunrise Overlook and the path leading to it
- Improved habitat and public safety throughout the site

Plant Communities

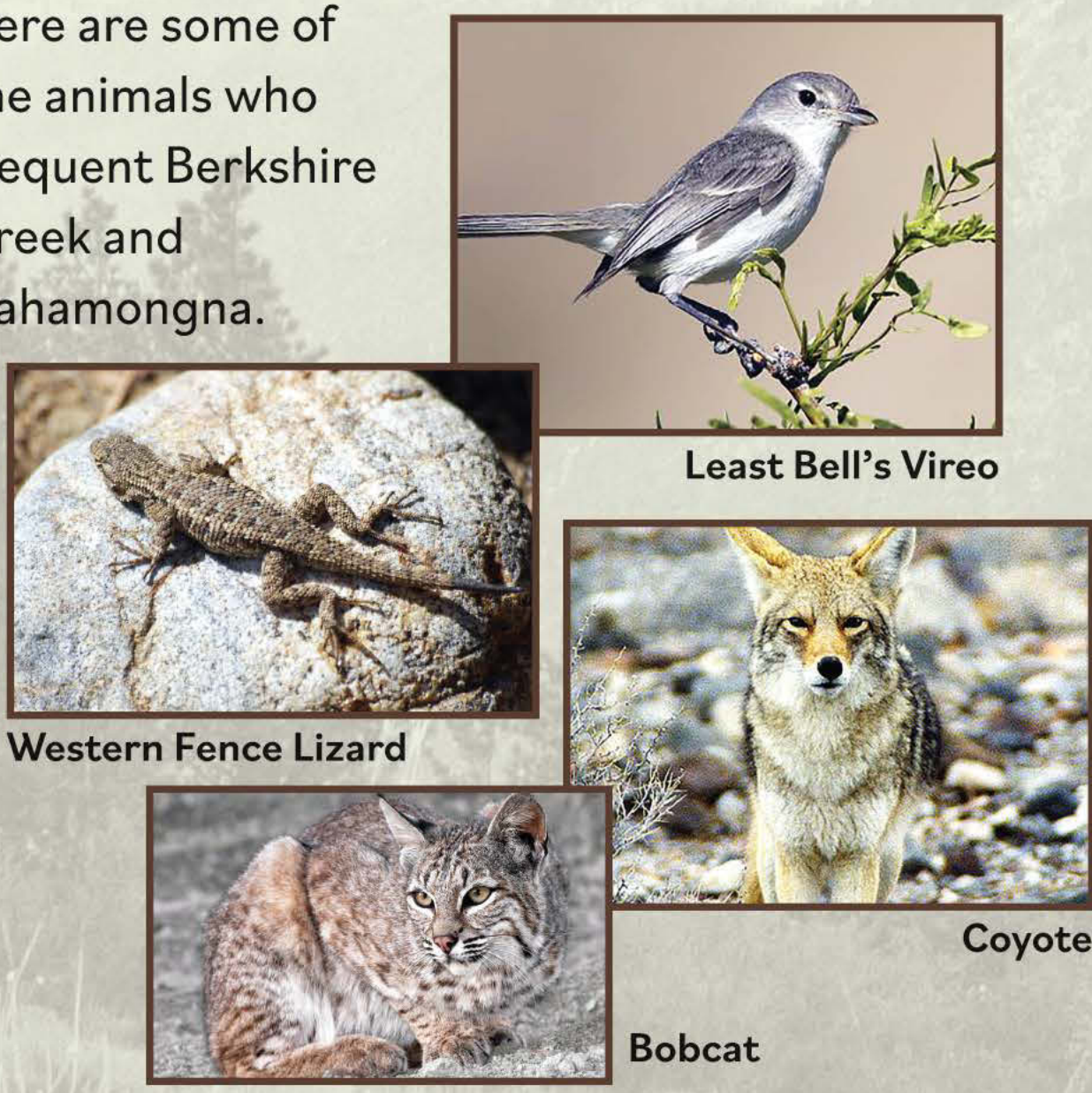
All of the plants used in the restoration project are specially suited to the unique environmental character of Berkshire Creek and Hahamongna Watershed Park. Together they protect water and natural resources and foster wildlife. Many of them have come from seeds and cuttings in the Arroyo Seco and grown at nearby Hahamongna Native Plant Nursery.

Habitat Types



Fostering Wildlife

Hahamongna is home to a wide variety of critters of every sort because of the rare blend of diverse habitats here and because it is the connecting link with the San Gabriel Mountains. Here are some of the animals who frequent Berkshire Creek and Hahamongna.



The Arroyo Seco Watershed
A watershed is an area of land that drains water into a particular creek, river, lake or aquifer. Water drains downhill, so hills, ridges and other high points define the boundaries of a watershed. The Arroyo Seco is a subwatershed of the Los Angeles River Watershed. The Arroyo Seco Watershed begins at the headwaters in the San Gabriel Mountains and extends to downtown Los Angeles, where it meets the Los Angeles River.

We all live in a watershed. Watersheds, big and small, are environmental zones that channel rainfall and feed our river systems. Protecting them is vital to the health of our water supply and our local environment. The Berkshire Creek restoration program is an outstanding example of stewardship of our local water and natural resources and a model for other important environmental activities.

Hahamongna Watershed Park Background



Hahamongna is that rare spot in the Arroyo Seco at the foot of the San Gabriel Mountains where the mountainous watershed meets the urban plain. Periodically floods roar into Berkshire Creek and the Hahamongna basin. Bounded on the north by the mountains and Jet Propulsion Laboratory and on the south by Devil's Gate Dam, Hahamongna Watershed Park is the key nexus between the San Gabriel Mountains and the Los Angeles River. It contains five unique habitat zones that only exist in alluvial canyons near the mountains. Most sites like this in Southern California have been destroyed or severely degraded.

Hahamongna Watershed Park celebrates the unique and precious water and natural resources here and honors the memory of our Native American predecessors who used to live and travel through this region.

For more info, please scan QR code below or visit <https://www.arroyoseco.org/berkshirecreek/>

